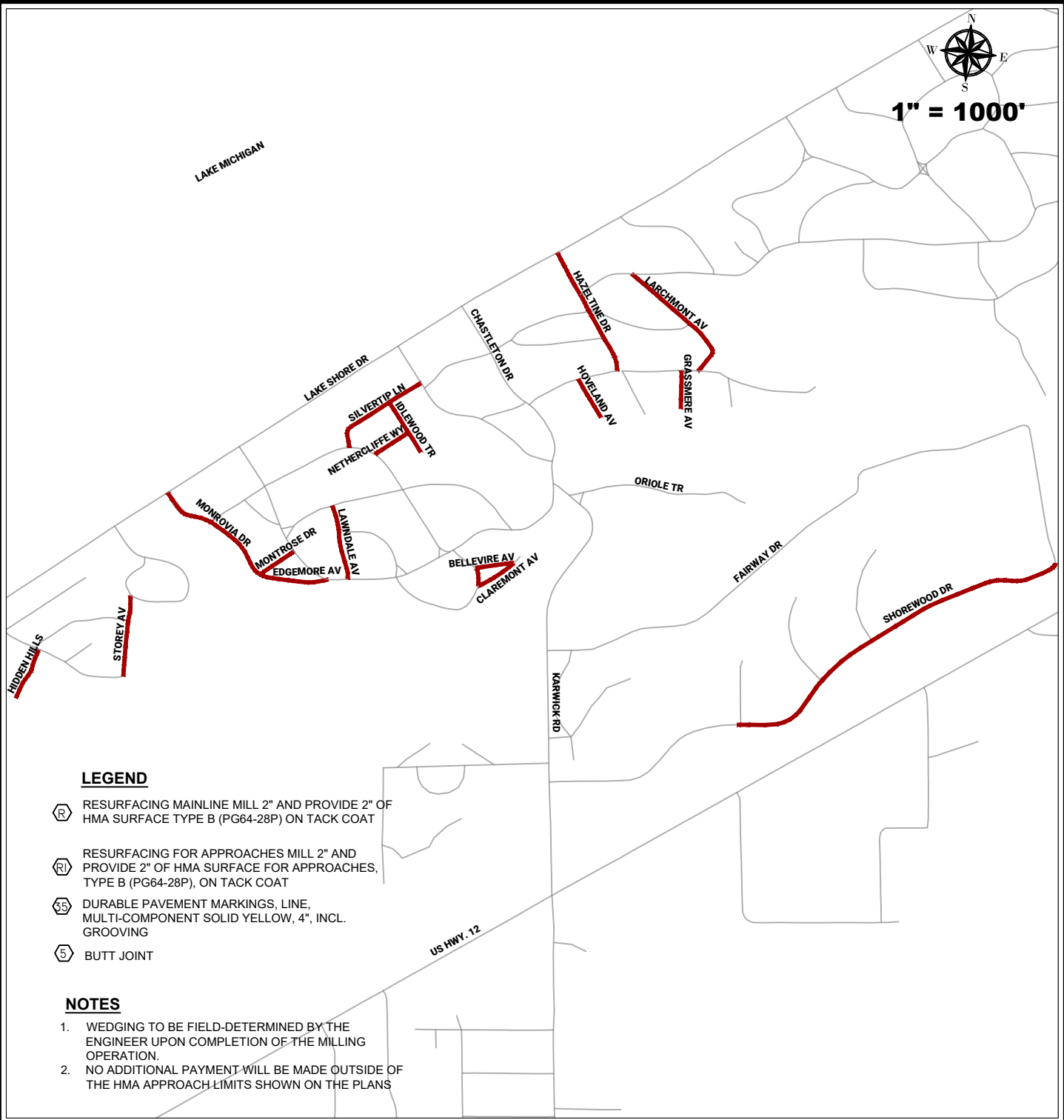








1" = 1000'



**LEGEND**

-  RESURFACING MAINLINE MILL 2" AND PROVIDE 2" OF HMA SURFACE TYPE B (PG64-28P) ON TACK COAT
-  RESURFACING FOR APPROACHES MILL 2" AND PROVIDE 2" OF HMA SURFACE FOR APPROACHES, TYPE B (PG64-28P), ON TACK COAT
-  DURABLE PAVEMENT MARKINGS, LINE, MULTI-COMPONENT SOLID YELLOW, 4", INCL. GROOVING
-  BUTT JOINT

**NOTES**

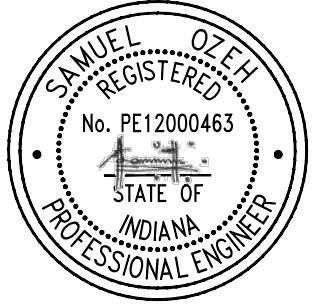
1. WEDGING TO BE FIELD-DETERMINED BY THE ENGINEER UPON COMPLETION OF THE MILLING OPERATION.
2. NO ADDITIONAL PAYMENT WILL BE MADE OUTSIDE OF THE HMA APPROACH LIMITS SHOWN ON THE PLANS

DRAWING DATE: <b>08.09.2021</b>	
SHEET NO.: <b>C-1.0</b>	
DRAWING SCALE: <b>1" = 1000'</b>	
DRAWN BY: <b>SNO</b>	CHECK BY: <b>TJH</b>

PROJECT NAME & LOCATION:



**2021 TOWN OF LONG BEACH COMMUNITY CROSSING PROJECT**



**HA** **haas & associates llc.**  
 CONSULTING ENGINEERS  
[www.HaasLLC.com](http://www.HaasLLC.com)  
 526 Franklin Street  
 Michigan City, IN 46360  
 Phone: 219-872-9407

SHEET TITLE: LOCATION MAP, LEGEND AND NOTES

DES #: 2100416

APP ID: 10637

Published from AutoCAD by: SAM OZEH  
Date & Time: Monday, August 9, 2021 10:48:28 AM  
File Location: p:\2021\2021296\_2021-2022\_lb\_ccmg\08 -- design-analysis\01-ACAD\1-Existing\Project\_Map.dwg